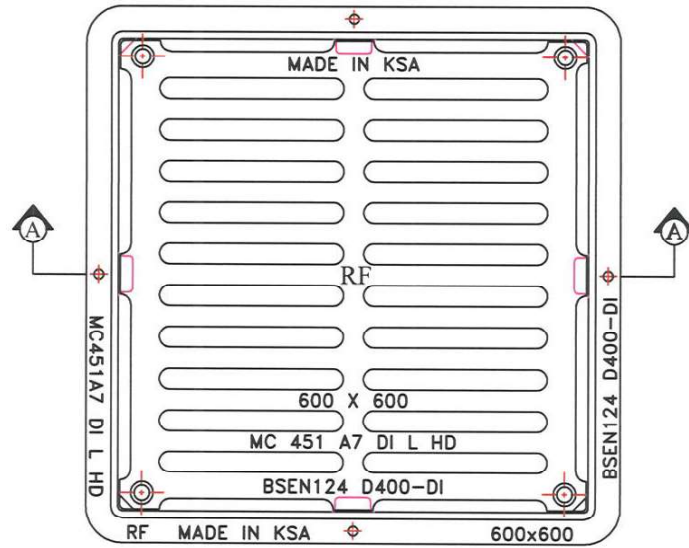


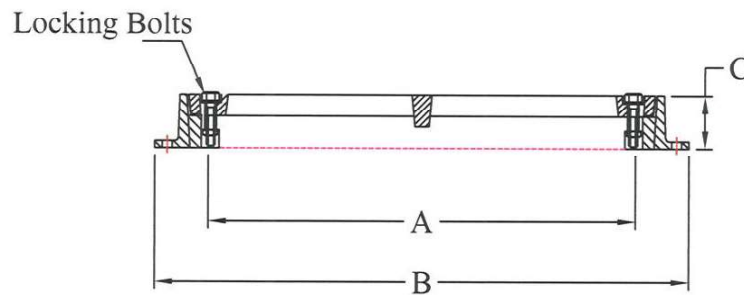
Heavy Duty Ductile Iron Grate and Frame

Features :-

- 4 nos Locking Bolts
- 4 nos Foundation Holes



PLAN



SECTION 'A-A'

CATALOGUE NO.	MATERIAL	CLEAR OPENING A(mm)	OVER BASE B(mm)	DEPTH C(mm)	LOADING (TONS)	SPECIFICATIONS
MC - 451 A7 DI L (HD)	Ductile Iron	600 Sq	750 Sq	75 mm	40	BS EN 124

RIYADH FOUNDRY

Riyadh :- Tel. 4984323

Fax. 4980395



All dimensions are in millimeter

TITLE : Ductile Iron Grate with Frame

DRAWN : abdul

APPROVED :

NOTE: DESIGN CHANGES RESERVED WITH RIYADH FOUNDRY

CHECKED : Eng. Bahaa

DATE : 13/03/2025

SCALE : N T S

DRG.NO: MC-451 A7 DI L(HD)



MATERIAL TECHNICAL DATA SHEET

RIYADH FOUNDRY
مصنع الرياض

Category	Details
Model No.	MC-451 A7 DI L (HD)
Material	Heavy-Duty Ductile Iron Grate and Frame
Material Standards	ASTM A536
Design Standard	BS EN 124 standards for manhole and handhole covers.
Design	Square ductile iron grate and frame assembly with a slotted grate pattern for water drainage. The grate sits within a recessed Square r frame and is supported by a robust rim.
Clear Opening	600 x 600 mm
Overall Base	750 x 750 mm
Depth	75 mm
Load Capacity	40 tons
Features	<ul style="list-style-type: none">▪ 4 Foundation Holes▪ 4 Locking Bolts
Protective Coating	<ul style="list-style-type: none">▪ Black Coaltar Epoxy
Inscription	Each grate includes a permanent cast-in inscription displaying the manufacturer's name, production batch number, load class, applicable standard, and country of origin

Submitted By:

Enger . Faisal Saeed

Technical Manager



COMPLIANCE CERTIFICATE

This is to certify that the product **Model No. MC-451 A7 DI L (HD)** has been manufactured and tested in accordance with the relevant international and project-specific standards. The product is made of **heavy-duty ductile iron**, produced in compliance with **ASTM A536 material standards**, ensuring high strength, durability, and long service life.

The design conforms to **BS EN 124 standards for manhole and handhole covers**. It consists of a **square ductile iron grate and frame assembly with a slotted grate pattern for efficient water drainage**. The grate sits within a **recessed square frame** and is supported by a **robust rim** to provide maximum stability and load-bearing capacity. The product dimensions include a **clear opening of 600 x 600 mm**, an **overall base of 750 x 750 mm**, and a **depth of 75 mm**. The product has been tested and certified to withstand a **40-ton load capacity (D 400 class)**, making it suitable for heavy-duty applications such as roads, highways, and high-traffic areas.

The assembly incorporates **four foundation holes** and **four locking bolts**, ensuring secure installation and enhanced safety in operation. For protection against corrosion and environmental exposure, the product is supplied with a **black coaltar epoxy protective coating**.

Each grate is permanently inscribed with the **manufacturer's name, production batch number, load class, applicable standard, and country of origin**, ensuring full traceability, compliance verification, and easy identification.

We hereby declare that the product **Model No. MC-451 A7 DI L (HD)** fully complies with the requirements of **ASTM A536 material standards** and the **BS EN 124 design standard**. The product has been verified to achieve a **40-ton (D 400) load capacity**, ensuring reliability, safety, and performance for heavy-duty applications.

Enger. Faisal Saeed
Technical Manager
Riyadh Foundry Co.

